

ENHANCED CHURCH ENTRANCE



Enhancing the Church Entrance - \$ 1.2M

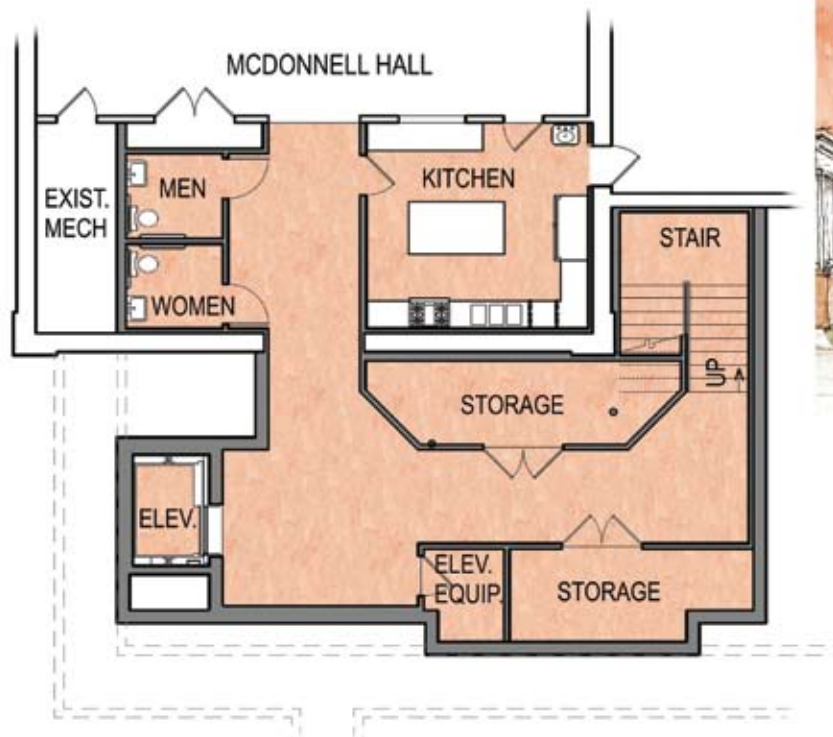
At this time our church is not fully handicap accessible. These improvements will put our church building in compliance.

Expanded South Entrance:

- Shift the entrance to align with the walkway from the parking lot, enhancing the transition to the worship space.
- Create an ADA accessible entrance to McDonnell Hall and Church, including a new ramp and elevator.
- Add a narthex (vestibule) for gathering before and after Mass.
- Include plans for future expansion of indoor and outdoor gathering space.

Lower Level (McDonnell Hall) Improvements:

- Create two ADA accessible Family Restrooms.
- Remodel and update the kitchen.
- Build in more space for storage.
- Create a secondary Interior Entrance to McDonnell Hall.



*Grateful for the Past,
Giving for the Future*

OUR LADY
OF PERPETUAL HELP